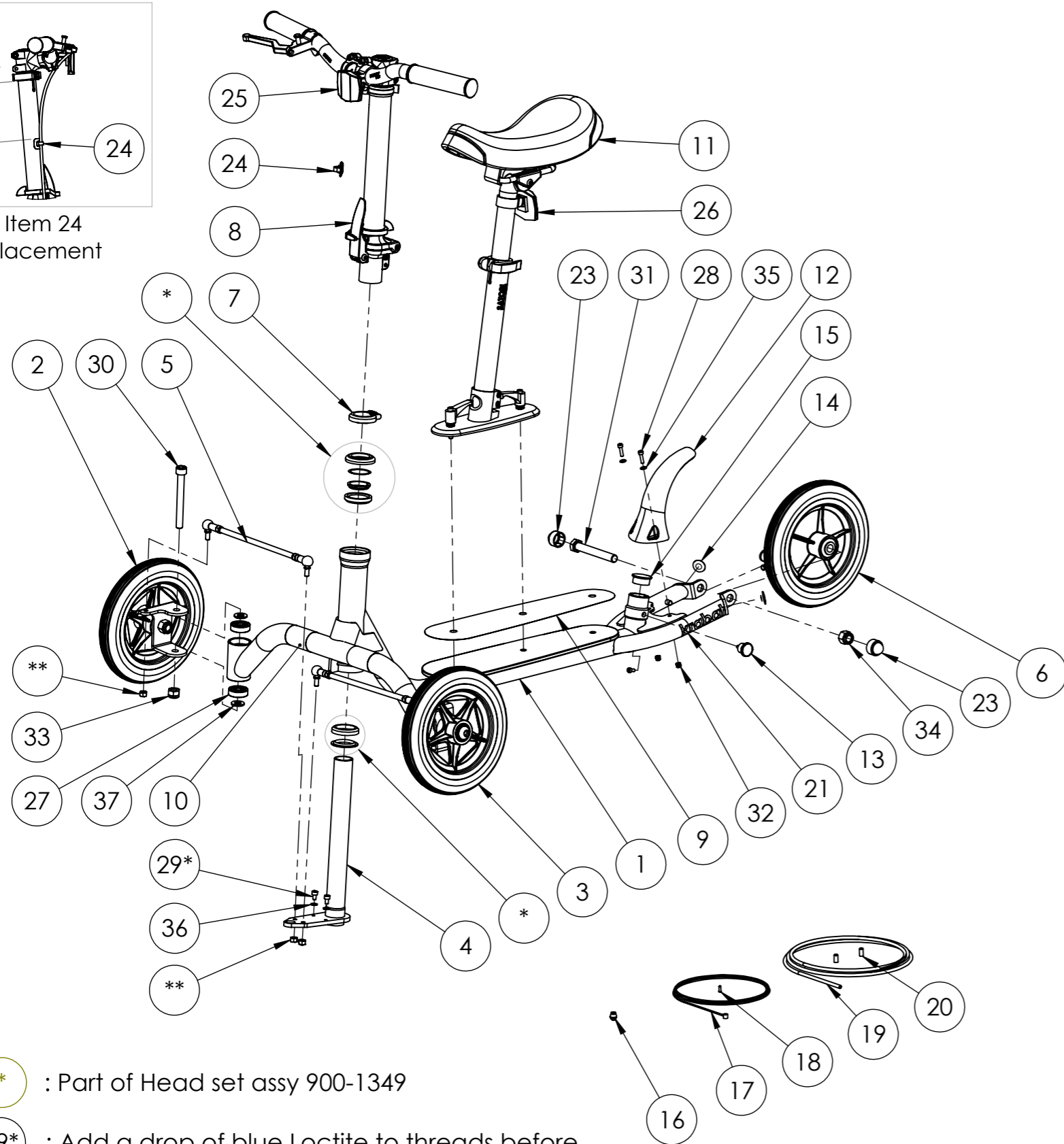


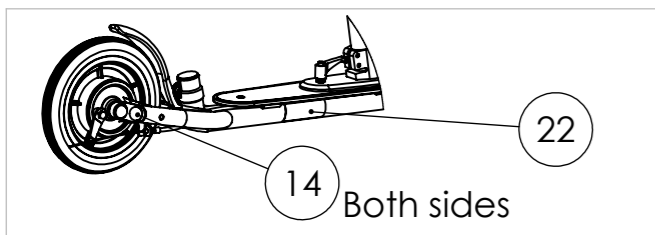
Item 24 placement



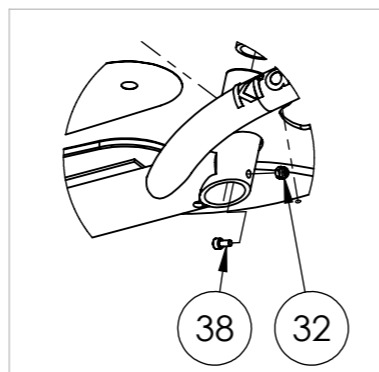
* : Part of Head set assy 900-1349

29* : Add a drop of blue Loctite to threads before tightening

** : Part of Steering rod assy 700-1107. Use a drop of blue Loctite on these nuts when assembling Steering rod assy in 700-1100



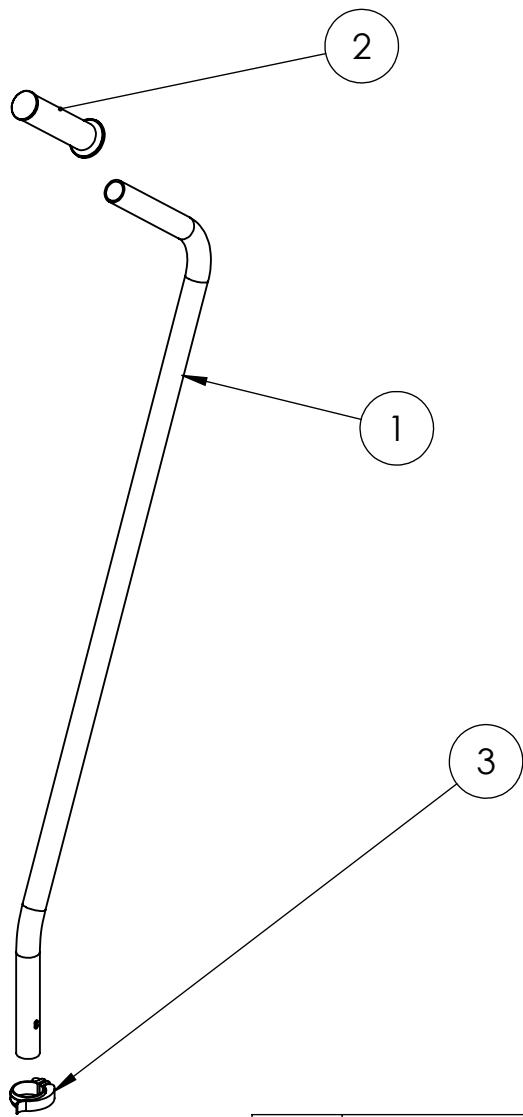
14 Both sides



ITEM NO.	PART NUMBER	Title	QTY.
1	700-1101	Frame assy	1
2	700-1104	Front wheel (right) assy	1
3	700-1105	Front wheel (left) assy	1
4	700-1103	Steering column assy	1
5	700-1107	Steering rod assy	2
6	700-1111	Rear wheel assy, Ø200 /drum brake	1
7	900-1344	Satori: Easy-Lock, black	1
8	700-1106	Handle bar assy	1
9	700-0038	PSP soft grip, black, kick board	1
10	700-0034	PSP Soft Grip, Black, 50x100 mm	2
11	700-1113	Seat assy	1
12	700-0030	Mud guard	1
13	900-1015	GN-36401	1
14	700-0040	Reflective tape, red	2
15	900-1021	Torp code: 208-GL 30S	1
16	900-1381	Brake wire adapter	1
17	900-1026	Brake inner cable, Ø=1,5mm/ l=2000mm	1
18	900-1028	Wire end cap	1
19	900-1027	Brake outer casing, Ø5mm/ l=1335mm	1
20	900-1357	End Cap, brake outer casing	2
21	900-1373	Krabat logo, carved black (22 x 90 mm)	1
22	700-0032	Krabat Runner serial number	1
23	900-1374	Nut cap, Landgraff: BK19	2
24	900-1401	Cable Guide	1
25	900-1421	Bike reflex, white (front)	1
26	900-1422	Bike reflex, red (rear)	1
27	Ball bearing - 6200 - 2NSE9C3 (Nachi)		4
28	DIN 912 M4 x 16 --- 16N - St - 10.9 - EZ		2
29*	DIN 912 M5 x 8 --- 8N - St - 10.9 - EZ		2
30	DIN 912 M10 x 90 --- 32N - St - 10.9 - EZ		2
31	DIN EN 24014 - M12 x 90 x 30-N - St - 10.9 - EZ		1
32	DIN EN ISO 7040 - M4 - N - St - 10.9 - EZ		3
33	DIN EN ISO 7040 - M10 - N - St - 10.9 - EZ		2
34	DIN EN ISO 7040 - M12 - N - St - 10.9 - EZ		1
35	Washer DIN 125 - A 4.3 - St - 10.9 - EZ		2
36	Washer DIN 125 - A 5.3 - St - 10.9 - EZ		2
37	Washer DIN 125 - A 10.5 - St - 10.9 - EZ		4
38	DIN 912 M4 x 8 --- 8N - St - 10.9 - EZ		1

UNLESS OTHERWISE SPECIFIED:

ALL DIMENSIONS ARE IN MILLIMETERS	TOLERANCES, LINEAR/ ANGULAR: NS-ISO 2768-1-m-K	DEBUR AND BREAK SHARP EDGES	PAPER SIZE: A3
		MATERIAL:	TITLE: Runner main assy
NAME	SIGNATURE	DATE	DWG NO.
DRAWN A.S.		07.02.18	700-1114
CHK'D			REVISION 04
APPVD		WEIGHT:	SHEET 1 OF 1 SCALE:1:10 DO NOT SCALE DRAWING



ITEM NO.	PART NUMBER	Title	QTY.
1	700-0031	Push Bar	1
2	900-1352	Landgraff code: ABH Ø25x125 (Hand grip)	1
3	900-1356	Push bar clamp, Shimano code: PR 900112	1

UNLESS OTHERWISE SPECIFIED:

ALL DIMENSIONS
ARE IN
MILLIMETERS

TOLERANCES,
LINEAR/ ANGULAR:

NS-ISO 2768-1-m-K

DEBUR AND
BREAK SHARP
EDGES

PAPER SIZE:

A4



Krabat Runner



MATERIAL:

TREATMENT:

TITLE:

Push bar assy

	NAME	SIGNATURE	DATE
DRAWN	A.S.		07.02.2018
CHK'D			
APPV'D			

FINISH:

WEIGHT:

DWG NO.

700-1110

REVISION

00

SHEET 1 OF 1

SCALE:1:10

DO NOT SCALE DRAWING